



VerySoft, LLC.

Web: <http://very-soft.com>

E-mail: contact@very-soft.com

Support: support@very-soft.com

NiceLight™

User's Guide

NiceLight v1.0

Document version: 0.6





Table of Contents

| | |
|---|-----------|
| Table of Contents | 2 |
| Introduction | 3 |
| Application's compatibility | 3 |
| Downloading and Installation/Uninstallation of the application | 3 |
| Application registration..... | 4 |
| NiceLight basic features | 5 |
| Localization and languages support..... | 6 |
| General principles of application management | 6 |
| Indication and notations | 7 |
| Program's functionality description | 7 |
| Display torch | 7 |
| Camera flash torch..... | 8 |
| All modes torch | 9 |
| Night clock..... | 10 |
| Keylocks usage..... | 11 |
| Program customization | 11 |
| Common settings | 11 |
| Autostart settings | 12 |
| Keylock options | 12 |
| Energy control | 13 |
| Night clock options | 13 |
| Night clock style manager | 14 |
| Energy control solutions..... | 14 |
| Usage terms and conditions..... | 14 |
| Trial version limitations..... | 15 |
| Support and Contacts | 15 |
| License agreement | 16 |



Introduction

We appreciate your interest in the NiceLight application.

“VerySoft” Company continues development and support of the traditional software product lines and presents new application for OS Symbian powered mobile devices. It's named NiceLight (previous name “SimpleTorch&NightClock”). This program helps to turn your handheld into powerful torch with built-in screensaver with specially designed night clock and applications' backlight manager.

Basic functionality and advantages of the NiceLight are:

- Torch that uses display's light emission and/or camera's flash for illumination;
- Night clock with changeable styles;
- Customizable program's functionality and interface;
- Battery energy control function;
- Stylish graphical interface.



As always we pay great attention to the ideas and requests of our applications Users and Customers and pressing towards presenting outstanding functionality and innovations in VerySoft software products. Application was designed following the non-intervention approach to the usual mobile handheld usage policies.

Application's compatibility

The program is compatible with mobile devices with Symbian™ OS management with v.9.x., with S60™ interface that support 176x208, 208x208, 320x240, 240x320, 352x416, 352x800 pixels screen resolution with minimum of 65 536 color spectrum.

To obtain full information about devices compatibility (including device indexes), please refer to manufacturer official web-site: <http://very-soft.com>

Downloading and Installation/Uninstallation of the application

You can download NiceLight as follows:

- Using WAP-links from mobile contents distributors through any of existent communication channels (CSD, GPRS, MMS, Wifi, etc.);
- Using PC or any other handheld device with NiceLight distributive on it and through IR-, Bluetooth connection or through special cable (data-cable);
- Using flash card adapter that can write data on your mobile phone flash-card.

**Attention**

To avoid penetration of your mobile handheld by virus and other malicious software DO NOT COPY OR INSTALL applications hosted on UNTRUSTED web sites or sent to you by unknown persons. We recommend to download NiceLight and other VerySoft programs from official web-site: <http://very-soft.com>

To install the application run “NiceLight.v.1.0.sis” file that was saved in the “Messaging” folder or in any other that was indicated before. Answer to the questions of installation dialog to end the setup process. If you have any troubles or errors while installation, please, refer to “Application's compatibility” chapter or to the “Frequently asking question and troubleshooting” section on the official forum. Full information about addresses and contacts you can find in “Support and Contacts” chapter.

Attention

Please read carefully program's “License Agreement” which will be displayed on the screen of your mobile handheld while installation process.

If you are not agreed with license conditions you must cancel the installation and delete all application copies from available storages.

You can mail all your complaints, suggestions for licensing conditions modification and corresponding juridical basis to: support@very-soft.com

Full text of the license can be found in the “License Agreement” chapter.

To uninstall the application close the NiceLight through “**Exit**” item in the Options menu. Open standard “Application Manager” and choose NiceLight. Press “uninstall” option item to erase the program.

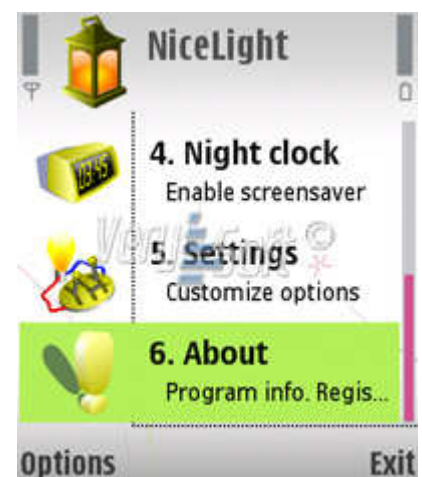
Application registration

Registration mode is accessible only after installing the application on the smartphone. Without registration program will be operable only for 7 days in trial mode with different kind of limitations (optional). All information about applied restrictions is accessible in the “Trial mode limitations” section.

You'll need the IMEI number for registration procedures. It can be found after pressing *#06# on your smartphone's keyboard or by entering “**About**” menu in the NiceLight application.

After NiceLight was installed you can activate it by pressing the appropriate icon in the menu. Possibly, the icon could be placed in special folder named as “**Applications**” or “**My own**”, please refer to the mobile handheld user's guide to know about standard folders names and their locations.

To start the NiceLight quickly, you can relocate the icon in the main menu or create special item in the “Active desktop” menu as well as bind special button of a mobile device. If you want to do any of these actions but don't know how-to, please refer to your smartphone user's guide.





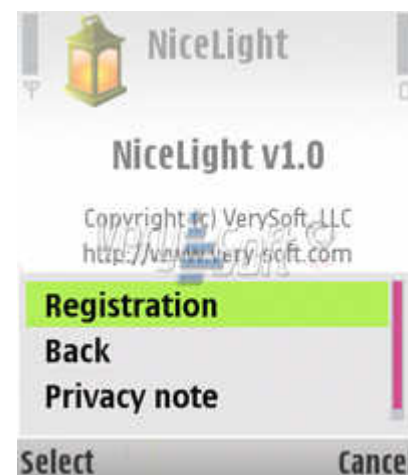
To register the NiceLight open the application and go to “**About**” menu, then press left soft-button with “**Options**” settings then open “Registration” item. Fulfill the spaces on the screen following the information below:

- In the “**Protection code**” field enter the digits listed after the phrase: “Enter this protection code:”
- In the “**Registration code**” field input the code received from online store or from VerySoft Sales or Support departments.



Please restart the application after completing registration form.

If all procedures were done properly then “Unregistered” text message will disappear from the “About” screen.

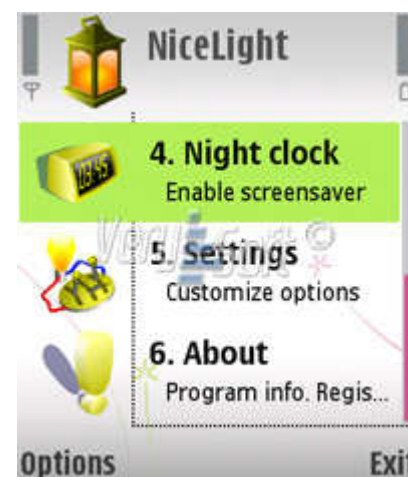


After the successful registration you'll be able to use fully functional software for the unlimited time period.

NiceLight basic features

List of main application features:

- Possibility to use mobile device display as a source of light;
- Possibility to use mobile device camera flash as a source of light;
- NiceLight can be used in background mode to backlight any currently used application;
- Select color of backlight in different programs' modes;
- Built-in NightClock with changeable interface;
- Extended customization options;
- Power charger tracker;
- Battery condition and energy control module;
- User friendly interface;



NiceLight functionality and features design are capable to satisfy even the most exigent users. If not then we're waiting for your ideas on our e-mail: support@very-soft.com or in our forum: <http://very-soft.com/forum>

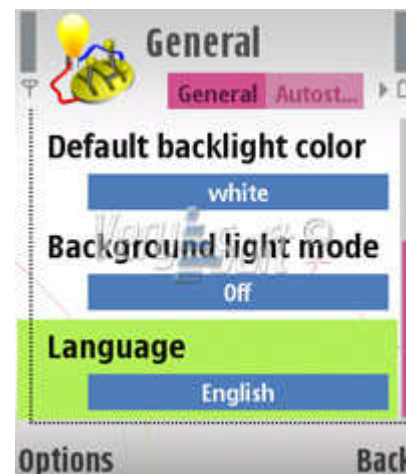


Localization and languages support

NiceLight interface is very flexible and supports variety of languages that are available through separately distributed packages (sis and six installation files). Next languages are included in the application distributive by default:

- English;
- Russian.

English version of the program's interface localization is set by default while installation. Additional localization languages can be found and downloaded free of charge from VerySoft's official web-site and forum: <http://very-soft.com/forum>



Attention

To avoid penetration your mobile handheld by virus and other malicious software DO NOT COPY OR INSTALL localization patches hosted on UNTRUSTED web sites or sent to you by unknown persons. We recommend to download all software developed by VerySoft Mobile department from official web-site: <http://very-soft.com>

Attention

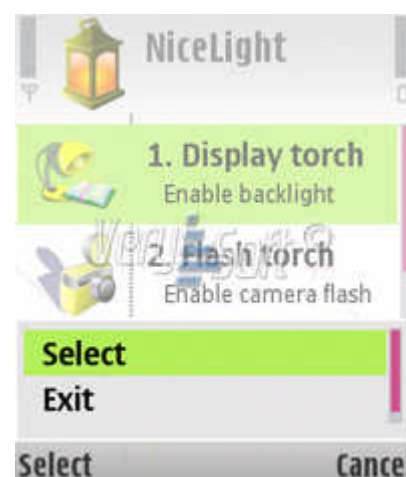
We are always happy to add new languages support in every our application to meet your wishes. If you want to help us in application localization you are always welcome to post your suggestions on our forum: <http://very-soft.com/forum> or send message to e-mail: testers_club@very-soft.com

General principles of application management

After the installation process is over you can use NiceLight program. To activate the application press on the icon in the main menu and wait while application starts.

To close the NiceLight and access the main screen just press **"Reject call"** button (with red phone image or similar) or **"Menu"** button. Also you can use **"Exit"** item in the **"Options"** menu that is displayed then you press on left soft-button.

If you want to change any application's setting start the application, find out **"Settings"** item in the main menu and enter it using central joystick button (also you can use **"Options"** left soft key with **"Select"** item). After you enter settings, select desirable option and adjust it.



To close the program press on right soft button with **"Exit"** sign.

Also you can emergently quit the application through the "Application manager" (that appears after long press on the **"Menu"** button) by hitting **"C"** hardware button.



Indication and notations

Main NiceLight window is designed in one of the classic Symbian OS interfaces style. It represents the list of accessible program's modes as well as fast access to every listed item through the hotkeys.

Every NiceLight operational state has its own associated icon and different system notification, if needed. Also it's possible to activate square formed icon on the device's screen which shows that NiceLight is active and running in the background.

Detailed description of every indication sign, text message and their corresponded notation can be found in the appropriate chapters of this paper.

Program's functionality description

NiceLight contains variable set of functions that are necessary for lighting (and fighting with forces of dark :-). All modes have rich set of options for handy and flexible application usage. When you are in the main menu of NiceLight any of the program's operational states can be activated with just one button press, just press the number on your keyboard which corresponds the digit near the mode name.

Display torch

This mode uses handheld's display as a source of light. You can detect the activity of this mode by table lamp image on the top left corner of your display.

Additional extras of this mode consist in changing the color of the backlight. To select one of alternative screen color you can use one of the next ways:

- In the activated **"Display torch"** mode select desirable color by pressing keyboard buttons (from 1 to 9);
- Open **"Options"** menu on the left soft button then go to **"Select light color"** and choose necessary color;
- While you are in the NiceLight main menu select **"Settings"** then go to first tab named "General" and adjust **"Default backlight color"** option. Detailed description can be found in the "Application customization" chapter.



Attention

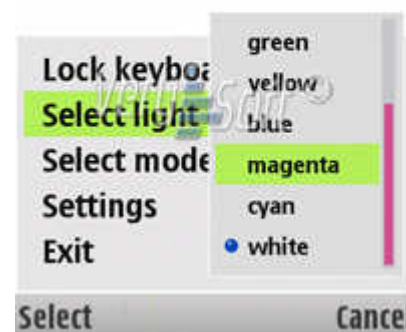
"Select light color" option is stored for a one session only. This means that if you minimize NiceLight with display torch mode enabled and then maximize it backlight color option will be the same. Detailed description can be found in the "Application customization" chapter.



NiceLight allows you to use fast switching between operation modes through “**Options**” menu. After pressing left soft button choose “**Select mode**” item and switch to another application's state.

To prevent accidental key pressing while illuminating process program has built-in keyboard locking support. It's possible to use system keylocker or additional one that was designed specially for NiceLight. Desirable keylocker can be selected in the application's settings. To get more information about keylockers differences, please, acquaint with “Keylocks usage” chapter.

You can return from “Display torch” mode to NiceLight main screen by pressing on the right soft-button “**Back**”. Exit from the whole application can be made in the “**Option**” menu using “**Exit**” item.



Camera flash torch

This mode utilizes camera flash as a source of light.

Operability of this mode can be identified by individual photocamera icon in the left top display's corner with appropriate text notification (“Flash light is now on”) in the center of the handheld screen.



Despite of similarity with previously described work mode this one keeps current system options for screen backlight and device power-saving settings.



Attention

You will not be able to use your primary or secondary cameras while “Camera flash torch” mode is active.

Options

Back

Additional extras of this mode consist in changing the color of the backlight. To select one of alternative screen color you can use one of the next ways:

- In the activated “**Display torch**” mode select desirable color by pressing keyboard buttons (from 1 to 9);
- Open “**Options**” menu on the left soft button then go to “**Select light color**” and choose necessary color;

While you are in the NiceLight main menu select “**Settings**” then go to first tab named “General” and adjust “**Default backlight color**” option. Detailed description can be found in the “Application customization” chapter.

NiceLight allows you to use fast switching between operation modes through “**Options**” menu. After pressing left soft button choose “**Select mode**” item and switch to another application's state.



To prevent accidental key pressing while illuminating process program has built-in keyboard locking support. It's possible to use system keylocker or additional one that was designed specially for NiceLight. Desirable keylocker can be selected in the application's settings. To get more information about keylockers differences, please, acquaint with "Keylocks usage" chapter.

You can return from "Display torch" mode to NiceLight main screen by pressing on the right soft-button "**Back**". Exit from the whole application can be made in the "**Option**" menu using "**Exit**" item.

All modes torch

This program's state is an integrated solution of two work modes – "Display torch" and "Flash torch". It allows simultaneously utilize all available sources of light that your mobile device has.

Current workmode can be identified by on-screen left top icon depicting photocamera and oil stove images. "Flash light is now on" text note will be placed in the center of the mobile display.

Attention

You will not be able to use your primary or secondary cameras while "Camera flash torch" mode is active.

Additional extras of this mode consist in changing the color of the backlight. To select one of alternative screen color you can use one of the next ways:

- In the activated "**Display torch**" mode select desirable color by pressing keyboard buttons (from 1 to 9);
- Open "**Options**" menu on the left soft button then go to "**Select light color**" and choose necessary color;

While you are in the NiceLight main menu select "**Settings**" then go to first tab named "General" and adjust "**Default backlight color**" option. Detailed description can be found in the "Application customization" chapter.

NiceLight allows you to use fast switching between operation modes through "**Options**" menu. After pressing left soft button choose "**Select mode**" item and switch to another application's state.

Attention

"**Select light color**" option is stored for a one session only. This means that if you minimize NiceLight with display torch mode enabled and then maximize it backlight color option will be the same. Detailed description can be found in the "Application customization" chapter.

To prevent accidental key pressing while illuminating process program has built-in keyboard locking support. It's possible to use system keylocker or additional one that was designed





specially for NiceLight. Desirable keylocker can be selected in the application's settings. To get more information about keylockers differences, please, acquaint with "Keylocks usage" chapter.

You can return from "Display torch" mode to NiceLight main screen by pressing on the right soft-button "**Back**". Exit from the whole application can be made in the "**Option**" menu using "**Exit**" item.

Night clock

This mode provides functionality of the screensaver with customizable backlighted night clock. One of the handiest feature of this mode is charger tracker which enables night clock screensave when the power conductor is connected.

Attention

Night clock working mode consumes lots of energy amount of your mobile device. "VerySoft" Company forewarns you to avoid using this mode when recharging is not accessible for a long time period.

Night clock work mode supports customizable appearance. You can select new skins using "**Style**" manager available in the "**Options**" menu when NightClock mode is activated. Additional information can be found in the "Style manager" chapter.



All smartphones that supports display orientation rotation can use additional option that change screen mode from landscape to portrait and vice versa. Display mode view selection is accessible in the "**Options**" menu by pressing on "**Rotate screen**" item. Also automatic screen mode view can be set in the program's settings. It will control current display condition and rotate it accordingly.

To prevent accidental key pressing while illuminating process program has built-in keyboard locking support. It's possible to use system keylocker or additional one that was designed specially for NiceLight. Desirable keylocker can be selected in the application's settings. To get more information about keylockers differences, please, acquaint with "Keylocks usage" chapter.

You can exit from "Night clock" mode to NiceLight main screen by pressing on the right soft-button "**Back**". Whole application can be quit in the "**Option**" menu using "**Exit**" item.





Keylocks usage

To prevent accidental buttons pressing while NiceLight usage automatic/semi-automatic keyboard locker can be used. You can specify preferable keylock in the program's settings.

Next options are available:

- System keyboard locker;

Selection of this item presents you fully original smartphone built-in keyboard locker. It prevents button presses that are listed in the system options.

- NiceLight keyboard locker;

It's additional option that helps application to block maximum number of keyboard buttons.

Both modes supports fast activation option. You can enable selected keylocker by double pressing on left soft-button.



Program customization

NiceLight application contains huge number of settings. They allow to personalize program and make it's usage more comfortable.

All changeable options are located in the "Settings" menu. It can be found in the main NiceLight screen. Additionnaly this menu is accessible from all operation modes of the application. While one of the torches or night clock is activated appropriate "**Settings**" item can be found pressing on the left soft-button with "**Options**" menu.

To access "Settings" item being in main program menu you can use #5 hotkey on your device keyboard.

Common settings

- "Start mode";

This option allows to specify one of the accessible workmode after application loads.

- "Backlight power";

Current control makes possible to setup display brightness for NiceLight program.

- "Default backlight color";

This setting provides opportunity to select lightning color.

- "Background light mode";





Activation of this setting allows enabling of the program's background workmode. It can be used for book reading or highlighting of any running application.

- “Show icon”;

If the “background light mode” is activated then possibly you want to track it activity. This option turns on icon on mobile device's active screen. Icon represent square image located in the top center. Icon color corresponds with activated backlight color.

- “Language”

Using this option you can change localization language of the application's interface. Additional languages can be found on the official web-site or forum: <http://very-soft.com>

Autostart settings

- “Autostart”;

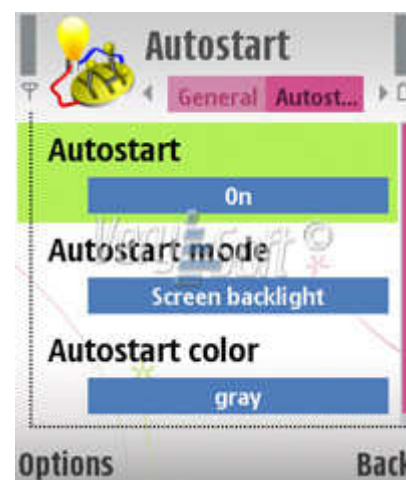
By enabling autostart option you'll adjust NiceLight to start automatically after turning your device on.

- “Autostart mode”;

This point let you specify what mode must be automatically enabled after NiceLight was loaded.

- “Autostart color”;

Current setting gives your possibility to setup the color for torch.



Keylock options

- “Keylock selection”;

This option allows to choose between two available keyboard lockers. Difference between “system” and “built-in” can be found in the “Keylocks usage” chapter of this paper.

- “Auto keylock”;

NiceLight contains automatical keyboard block option that provides mechanism against accidental key pressing.

- “Keylock timeout”;

If the previous setting was activated then current option can be used to specify timeout before keyboard will be automatically blocked.





Energy control

- “Battery safe mode”;

This selector enables control over battery discharging according to the parameters' value listed below.

- “Battery control delay”;

It represents customizable value for timeout period before battery safe mode monitoring control activates.

This option designed to postpone energy control start and allow to use application skipping battery condition.

- “Critical battery level”;

Current control specified the border discharge value that activates selected response.

- “Reaction”;

It provides selection of application's behaviour when the battery is discharger to specified critical point.



Night clock options

- “Clock backlight power”;

This option provides customizable screensaver glow value. It's independent from “**Backlight power**” setting located in the “**General**” tab.

- “Charger tracker”;

Activation of this item allows NiceLight to start automatically in Night Clock mode when the charger is connected to a mobile device.

- “Start confirmation”;

Current option helps to control application's behaviour and enables dialog that asks user's confirmation before loading NiceLight with “charger tracker” option activated.

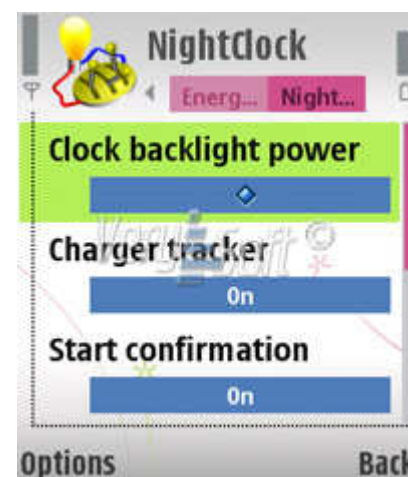
- “Clock inactivity timeout”;

This setting influences on time period value for night clock screensaver backlight activation.

After specified timeout expires illumination power will be equal to value specified in the “**Backlight power**” setting located in the “**General**” tab.

- “Inactivity timeout in ...”;

It presents time unit selection for previous setting.





- “Display mode”;

Current option allows indicating mobile device screen view (portrait or landscape) when NiceLight activates in screensaver mode.

Night clock style manager

You can easily personalize the application using different styles. They can be found in the “**Style**” item of the “**Options**” menu accessible in the “Night clock” operation mode. Additional styles are distributed as separate installation packages (sis, six extensions) and can be download from VerySoft's official website: <http://very-soft.com>

To change decoration style, please select “Night clock” mode from the NiceLight main menu then press left soft-button “**Option**” and select “**Style**” setting. In the list of accessible style choose one desired and press “**Options**” then “**Activate**”. Also you can look over the style appearance in the full screen by selecting “**Preview**” option.



To add new styles in the application's list you must download and install them as a usual program for Symbian OS powered mobile device. After you install new style please restart NiceLight.

Energy control solutions

VerySoft is pressing towards development of innovative instruments for Symbian OS software and introduces new approach in maintaining battery life from a single charge cycle. Energy control software innovation helps you to save enough energy to have a chance to use primary communication functions of your device – calling, sending messages, etc.

Additionally, VerySoft's energy control solutions is a part of global natural resources protection movement.

Usage terms and conditions

According to the license agreement that is represented in the “**License agreement**” chapter, NiceLight application distributed with “as is” principle. VerySoft persistently improves the quality of the software products and services. Company is trying to develop and distribute maximum compatible applications but can't be reliable for all users' hardware and software configurations. Please always try software BEFORE buy.



Trial version limitations

Trial version of the NiceLight represents partly limited variant of the application that has time usage limit. After trial period ends program will not start.

Next limitations are included in the test version:

- Selected style in the Night clock mode will not be saved after NiceLight quits.
- Automatic keyboard locker is not functionnal.

Trial period is limited to 7 days.

Support and Contacts

You can find all accessible information about current software products, their last versions and updates on the official VerySoft web-site: <http://very-soft.com>

All issues related to ordering products are welcomed on the e-mail: **support@very-soft.com**

Unregistered users as well as registered can apply to a free support on the Support Team e-mail address: **support@very-soft.com** or to the official VerySoft forum: <http://very-soft.com>

Your ideas, suggestions and advices for improvement any of VerySoft software are always welcomed by e-mails: **contact@very-soft.com** or **support@very-soft.com**

All individuals and parties, interested in cooperation are welcome to contact us by: **contact@very-soft.com**



License agreement

END USER LICENSE AGREEMENT

This End-User License Agreement ("EULA") is a legal agreement between you (either an individual or a party entity) and VerySoft, LLC. Please, read it carefully. This EULA covers all existing versions of NiceLight, NiceLight Pro and their beta versions from now on referred below as "Product" unless otherwise specified.

This software is shareware (TRY BEFORE you BUY). This means:

I. All copyrights to this software are exclusively owned by VerySoft, LLC. VerySoft, LLC reserves all rights not expressly granted to you in this EULA.

II. The Product is protected by copyright and other intellectual property laws and treaties. VerySoft, LLC own the title, Product content, copyright, and other intellectual property rights in the Product. The Product is licensed, not sold.

III. TO THE EXTENT NOT PROHIBITED BY LAW, IN NO EVENT IS VERYSOFT LLC LIABLE UNDER ANY LEGAL THEORY, WHETHER TORT (INCLUDING NEGLIGENCE), CONTRACT, PRODUCTS LIABILITY, OR OTHERWISE, FOR ANY DIRECT, INDIRECT, INCIDENTAL, SPECIAL, EXEMPLARY, OR CONSEQUENTIAL DAMAGES OF ANY KIND ARISING OUT OF OR RELATING TO THIS LICENSE OR THE USE OR INABILITY TO USE THE COVERED CODE OR ANY PORTION THEREOF, INCLUDING BUT NOT LIMITED DAMAGES FOR LOSS OF GOODWILL, WORK STOPPAGE, COMPUTER (MOBILE HANDHELD, SMARTPHONE, CELLPHONE) FAILURE OR MALFUNCTION, LOSS OF USE, LOST DATA, LOST PROFITS, BUSINESS INTERRUPTION, PROCUREMENT OF SUBSTITUTE GOODS OR SERVICES, OR ANY OTHER DAMAGES OR LOSSES, EVEN IF VERYSOFT LLC HAS BEEN ADVISED OF THE POSSIBILITY OF SUCH DAMAGES, AND NOTWITHSTANDING THE FAILURE OF ESSENTIAL PURPOSE OF ANY REMEDY. SOME JURISDICTIONS DO NOT ALLOW THE LIMITATION OF LIABILITY OF INCIDENTAL OR CONSEQUENTIAL DAMAGES, SO THIS LIMITATION MAY NOT APPLY TO YOU. IN NO EVENT DOES VERYSOFT'S TOTAL LIABILITY TO YOU FOR ALL DAMAGES (OTHER THAN AS MAY BE REQUIRED BY APPLICABLE LAW) UNDER THIS LICENSE EXCEED THE AMOUNT OF FIFTEEN AMERICAN DOLLARS (US \$15.00).

IV. You must not use, copy, emulate, clone, rent, lease, sell, modify, decompile, disassemble, reverse engineer, or transfer the Product license, or any subset of the license Product, except provided for this agreement. Any attempt of unauthorized use will result in immediate and automatic termination of this license and may result in criminal and/or civil prosecution. All rights not expressly granted here are reserved by VerySoft, LLC.

V. Installing, copying, loading and otherwise using this software signifies the acceptance of the all license terms and conditions.



VI. If you do not agree with the license terms and conditions you must remove installed software and all its files from your storage devices and cease to use the Product.

VII. Present agreement with end-user (including all supplements and modifications, that deliver with software) is full legal agreement between you and VerySoft, LLC about mentioned in this EULA Products and commute for all previous and current oral and written statements, announcements, suggestions and declarations concerning licensed software. If any of clause in current agreement become void, impracticable or unlawful, all the rest of clauses are in force legal.

If you use unregistered version of Product, please, read the section B. "FOR UNREGISTERED USERS".

If you already register Product, please, read the section A. "FOR REGISTERED USERS".

A. "FOR REGISTERED USERS".

A.1. Once registered, the user is granted a non-exclusive, non-transferable license for any legal purposes, without right to sub-license, to use this Software in accordance with this EULA and any other written agreement with VerySoft. One copy of the license gives you the right to use Product ONLY ON THE ONE MOBILE HANDHELD DEVICE.

A.2. After Product registration, the "Registration code" is presented. "Registration code" incarnates the right to use one copy of the licensed software on the single device under the conditions listed in this EULA.

A.3. License itself and software can't be leased or rent and can't be granted to third-party individuals (parties).

B. "FOR UNREGISTERED USERS".

B.1. Anyone may use unregistered limited version of this software during testing period. After testing period has end you must register to continue using the product.

B.2. Unregistered shareware version of this software may be freely distributed, provided the as non-modified distribution package. While distribution anyhow the following information must be visible and provided describing the application:

Developed by Very-Soft, LLC – <http://very-soft.com> , contact@very-soft.com.

Also you must inform Very-Soft, LLC about the name and (web-) address of the project (software catalogue, online blog, etc) where you going to distribute our Product to e-mail: contact@very-soft.com

Thank you for using our Products.

Very-Soft, LLC

Web-site: www.very-soft.com;

E-mails: contact@very-soft.com; support@very-soft.com